

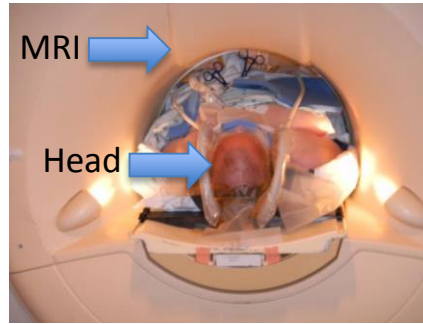
Surgery for DBS Leads in MRI



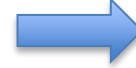
Arrive at the hospital on the morning of surgery.



You will go to the preoperative area and meet with the anesthesiologist who will help you go to sleep under a general anesthetic.



You will be completely asleep and will have a **breathing tube** during this surgery. Once you are asleep, you will be placed into a secure plastic head frame that will keep your head safe and not moving during surgery.



We will then hang sterile drapes up in the MRI. The entire surgery will occur in the MRI.



We will then close your incision. Finally we will remove you from the plastic head frame and leave the MRI. You will then wake up in the surgical recovery area.



We will place a small plastic cap about the size of a quarter over the hole in your skull to keep the lead in place at the end of surgery. This cap will be **under** the skin.



Over the next few hours, pictures of your brain will be taken in the MRI to help us implant the lead in your brain correctly.

